

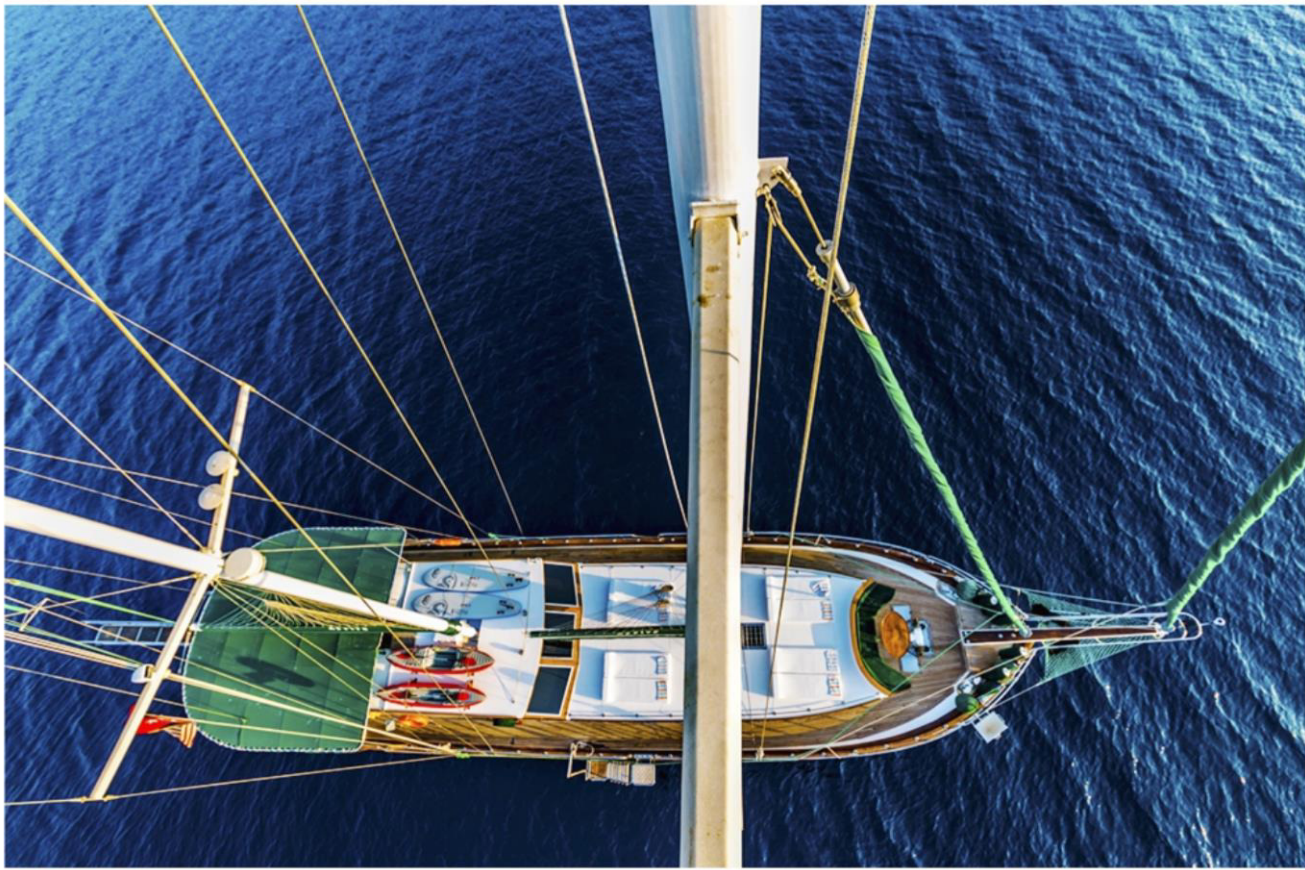
MICHELE

Luxury 4 Cabins Gulet



Greek flag, Greek crew for greek islands

(From Mykonos for the Cyclades & Kos for the Dodecanese)



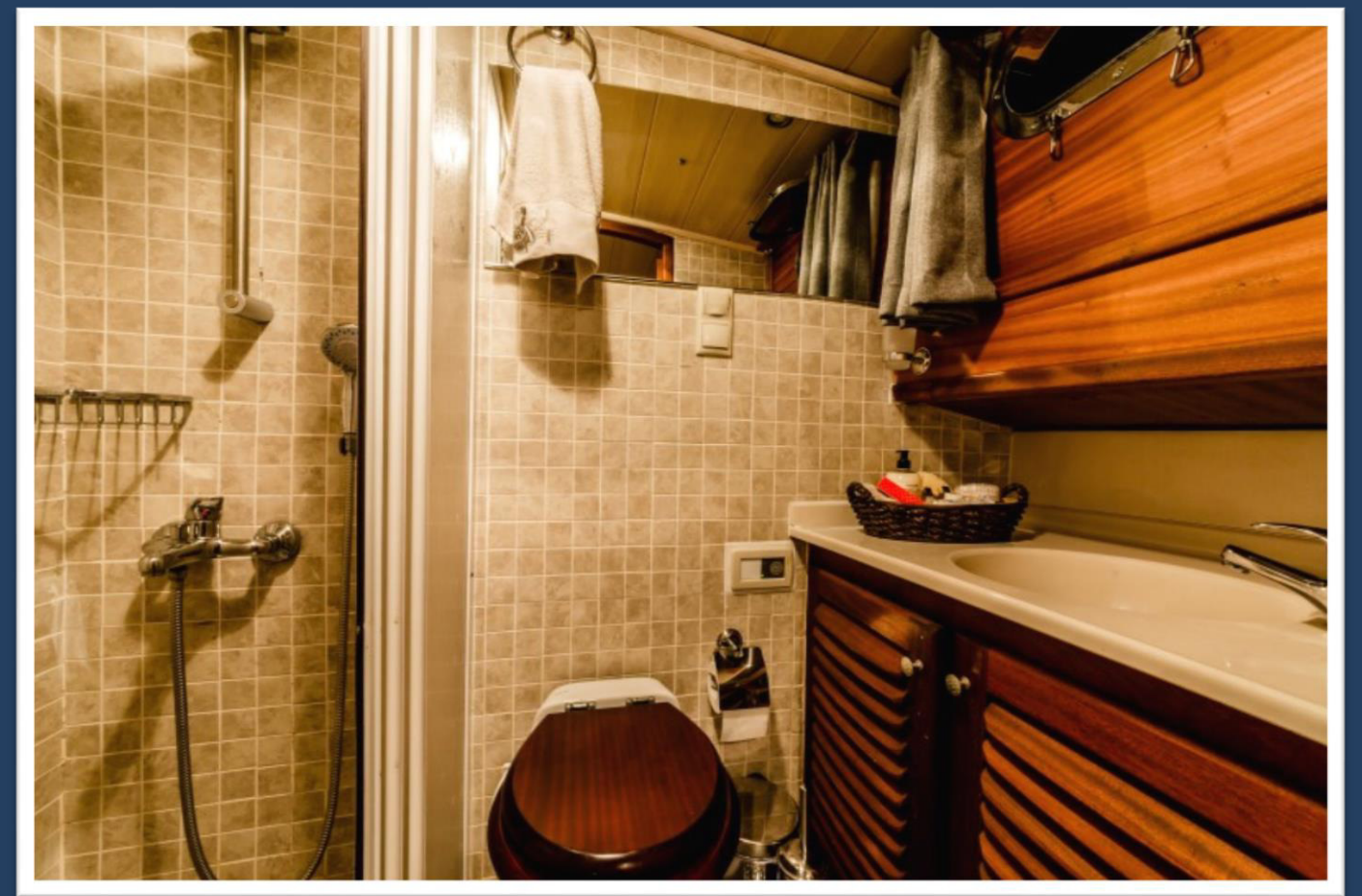
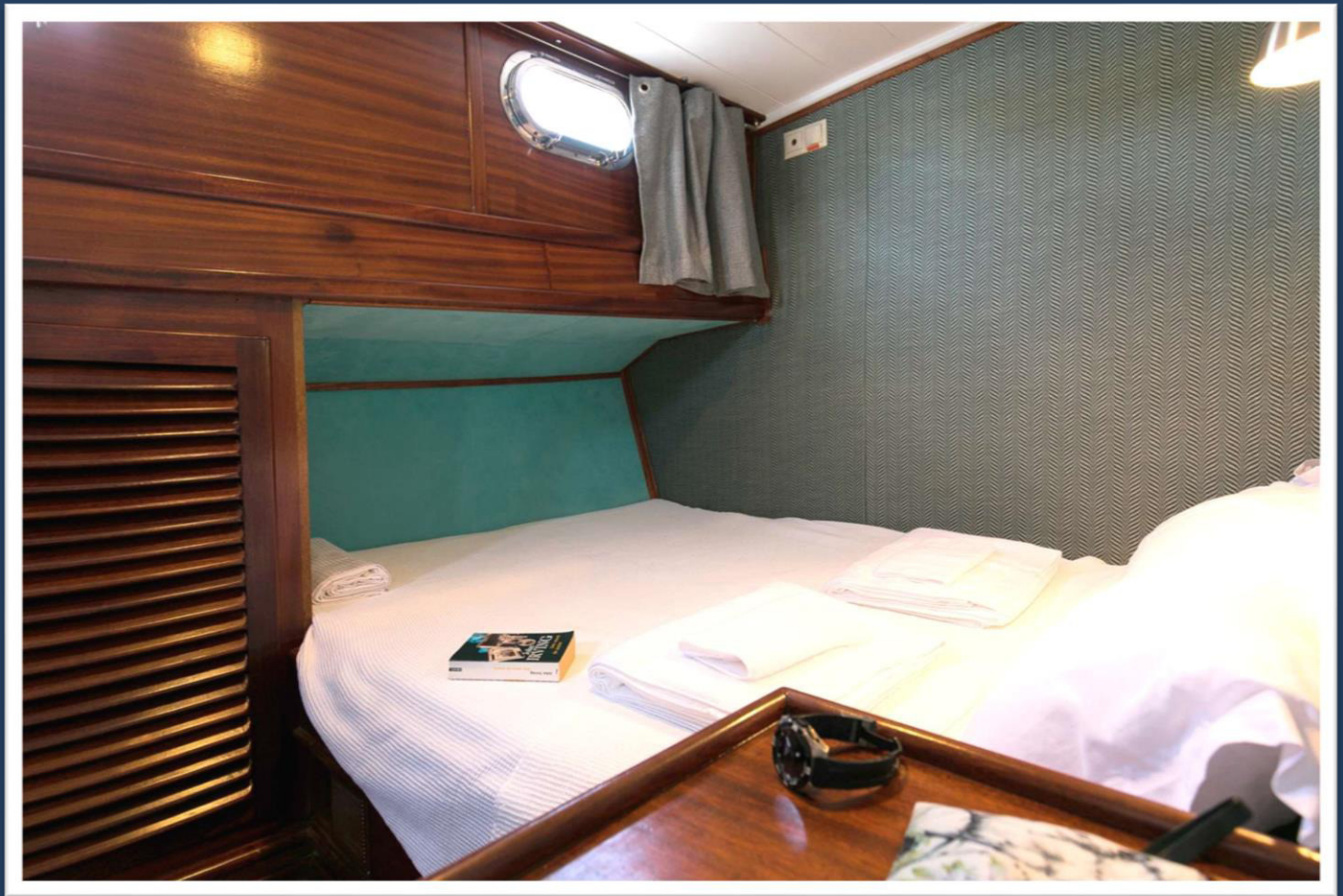












CREW



TENDER



WATER TOYS



LAYOUT



GENERAL SPECIFICATIONS

Type	GULET	Built / Refit	2006/2015
LOA	24 M / 77 FT	Flag	GREEK
Beam	6,20 M / 22 FT	Speed	9-10 KNOTS
Design	TURKISH	Base Port	LIPSI (LEROS)
Builder	TURKISH	Pax	8
Hull	LAMINATED WOOD	Crew	3

ACCOMMODATION DETAILS

Cabins / berth / type	4 DOUBLE
Bathroom	ENSUITE WITH SHOWER CELLS
Toilet type	ELECTRIC VACUUM FLUSH
Crew accommodation	SEPARATE
Salon	COMFORTABLE SEATING AREA, BAR, MODERN FURNISHED
Galley	FULLY EQUIPPED, 5 FRIDGE, NESPRESSO MACHINE (FREE)
Cabins details	1 MASTER CABIN , 3 DOUBLE WITH BATHROOM
Air-conditioning	FULL
A/C Use During Night	4/6 H/DAY
TV	IN SALOON ONLY
Electricity	220 V, 24 V
Other	ICE MACHINE, CD PLAYER, DVD PLAYER, HAIR DRYERS

DECK EQUIPMENT

Mast / Sail equipment	FURLING, MAIN, MIZZEN
Dinghy	3,60 WITH 50 HP
Water Toys	WATER SKI, 2 CANOE, 2 PADDLE, SNORKELLING, FISHING
Other	SUN AWNINGS, SUN MATTRESSES, DECK SHOWER, SEA LADDER, BBQ, LINEN

MACHINERY & ELECTRONICS

Main engine(s)	440 HP MAN
Generator(s)	12,5 x 2 KW (2017)
Electronics & Navigation	VHF, DEPTH SOUNDER, RADAR, GPS, COMPASS, GSM
Fuel Capacity	4,000 LT
Water Capacity	8,000 LT

CREW

GREEK : CAPTAIN Léonidas TZARTOS (42 years old) + deckhand Nikolas, + Chef